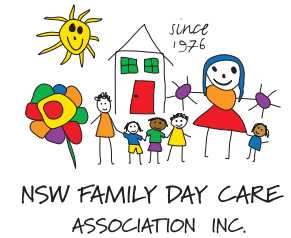


NSW Family Day Care Association

Strategic Plan

2020 - 2023

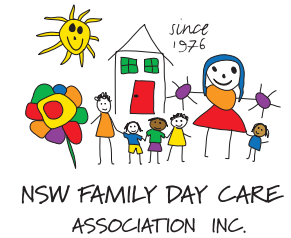


Our vision

To inspire and lead the Family Day Care, In-Home Care and wider Early Childhood Education and Care sectors through innovative quality services and programs.

Our mission

New South Wales Family Day Care Association provides quality professional support to its members, service providers, families and the Early Childhood Education and Care sector. We do this through resource creation, direct service provision, advocacy, recognised vocational and professional training, research, information dissemination, consultation, mentoring and collaborative networking opportunities.



Our values

In conducting our business, we will;

- Act with integrity and in an ethical manner
- Uphold transparency in governance and decision making
- Respect the confidentiality of our members, service providers, families and students
- Maintain honest and trustworthy relationships

In upholding values within the Early Childhood Education and Care sector, we will;

- Continue to prioritise, improve and provide quality ECEC services
- Create and embrace an inclusive environment and practice
- Maintain our state, national and global outlook

In providing services to members, we will;

- Consult with members and reflect their voice in our practice
- Advocate on the interests of our members
- Promote the public profile of Family Day Care

In relation to participation of our membership, we will;

- Encourage and support networking opportunities and meetings between member services
- Respect the contribution of membership
- Provide opportunities for membership feedback

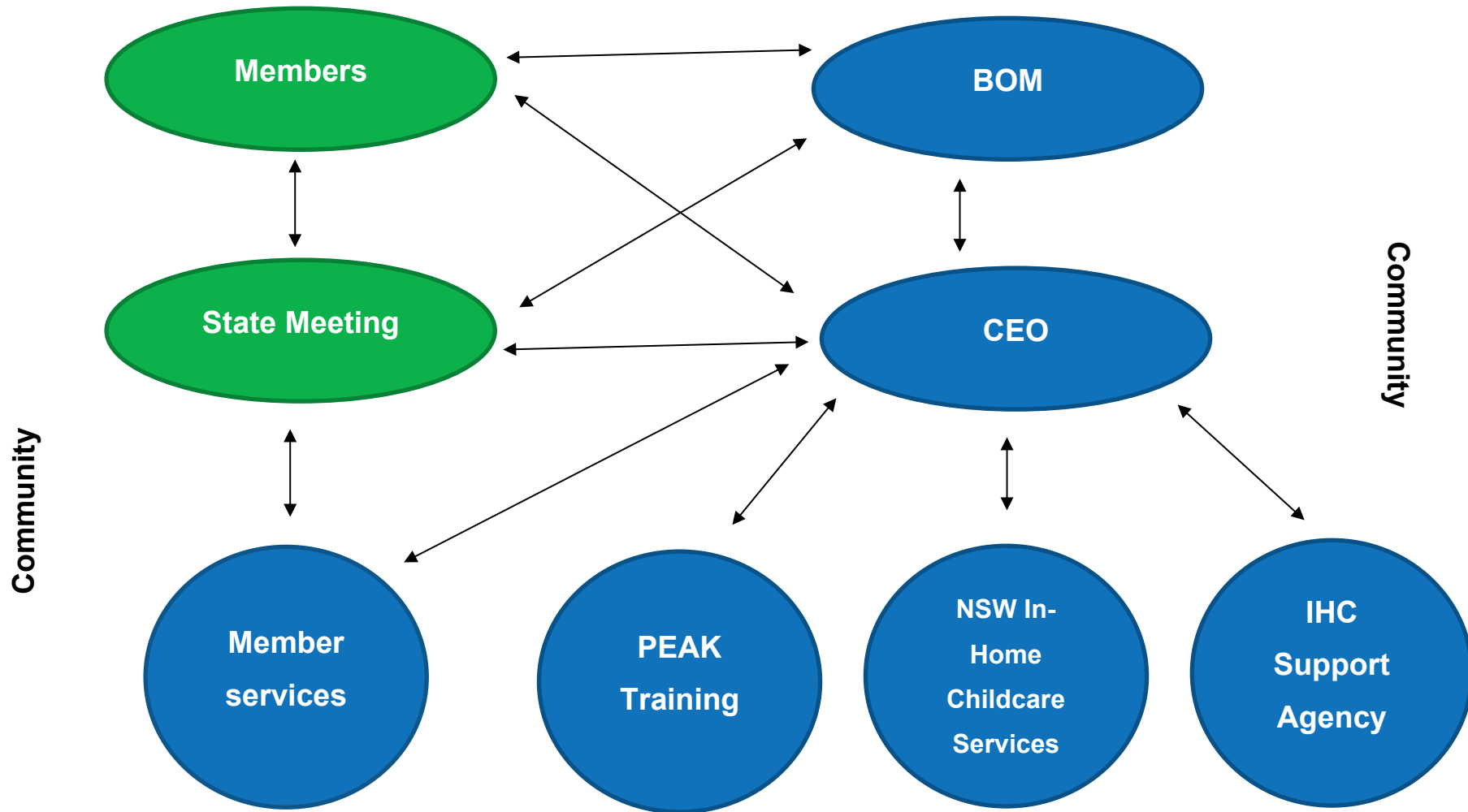
In relation to staff, we will;

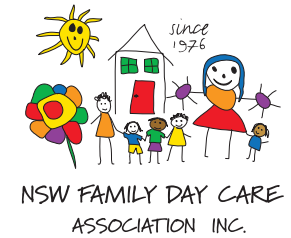
- Treat staff equitably and fairly in line with EEO and WH&S legislation
- Provide appropriate direction and recognition for efforts
- Provide opportunities for consultation on all relevant issues
- Provide opportunities for growth of individual skill sets

In relation to service providers, families and children, we will;

- Advocate for best outcomes for families
- Respect the rights of the child
- Support service providers through collaborative partnerships with families

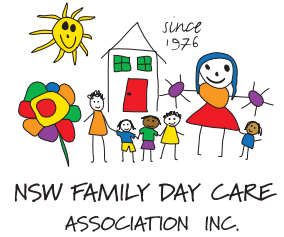
Organisational chart





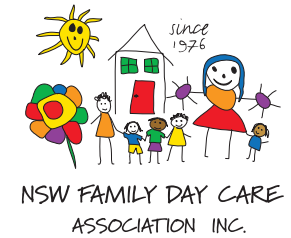
Major goals

1. To support and meet the needs of our members, service providers, families and the Early Childhood Education and Care sector
2. To ensure our business activities are viable and operate effectively
3. To maintain, promote, extend and strengthen the Association and its members (both services and educators)



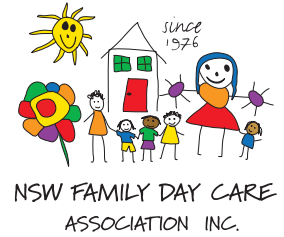
Balanced Score Card considerations for achieving each Major Goal

- Members, service providers, families, students, the ECEC sector and the broader community
- Financial
- Development and growth
- Risk-management/governance/compliance
- Innovative practices



Key Result Areas

1. To strengthen and maintain the membership structure
2. To support all members, students, service providers, families and the ECEC sector through the business arms
3. To continue to deliver effective communication and promotion of the Association, membership and the business arms
4. To grow and diversify our business services and financial viability
5. To be a leader in innovation and change



Considerations

Balanced Score Card is considered when the Strategic Plan is reviewed

- KPI are used as Performance Indicators for appraisals
- Each business arm reviews and utilises their individual SWOT analysis twice a year
- Reviews should support the Major Goals and Key Result Areas and identified strategies
- Strategic Plan is reported back to BOM by CEO twice a year



Contact

NSW Family Day Care Association

Level 1, 1 Sloane Street
Summer Hill NSW 2130
PO Box 386

P: 02 9779 9999

F: 02 9779 9998

info@nswfdc.org.au

www.nswfdc.org.au